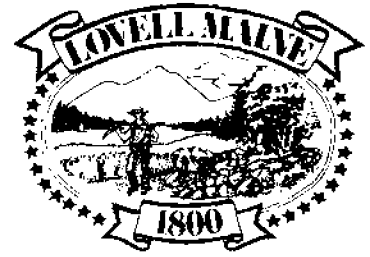


# Yesterday's News

*Published irregularly by the Lovell Historical Society*



Volume 13, Number 2

Spring 2006



*The True, Walker & Heald Store in the 1880's.*

## **Lovell Village's General Store**

In the center of Lovell Village, stands a group of buildings made up of three connected structures. It might be difficult to envision today, but for a century and a half this row of buildings served as the town's unofficial community center. There were a variety of businesses situated here, such as a millinery store, laundromat, hardware store, casket shop, telephone office and post office. The store owners, business names and the merchandise sold was ever changing but in the midst of these buildings there was always one constant – here stood a general store.

As with most rural New England communities, the general store was the town's business and social center. People came there to shop, catch up on the local news, or just "loaf". Over the years the buildings stood witness to some significant changes in the town - from a growing agricultural community in the early 1800's, to the significant decline in the town's population following the Civil War, and the later development of Lovell as a resort community. Despite all of this, the general store stayed in business.

It has been close to twenty years since the last grocery item was sold. During that time, much of the rich history of Lovell Village's general store has faded. Fortunately, two of our members have recounted their memories, featured in this edition.

## From the President

Welcome to *Yesterday's News*! This edition features three articles written by members.

In the last few months we presented two events with the Charlotte Hobbs Memorial Library. The three genealogy classes taught by Kathy Amoroso were very well attended. Additionally, we hosted "Old Lovell: A Conversation", moderated by our oral historian Jo Radner. About 40 people attended as Ron & Sally McAllister, Phyllis Chandler, Juanita Perkins and Samuel Ring reminisced about growing up in Lovell. After one and a half hours it was hard to end the discussion! With that much enthusiasm, we hope to present other "conversations" from time to time.

On the horizon, on Sunday July 9th we will be hosting our 7th annual Antique Show & Sale. This is always an extremely popular event and we hope you will be able to attend. Bev Bassett, our new Chairperson, is planning significant improvements this year and is hoping to attract 35 Antique Dealers. There will be early admission from 7 to 8:30 for \$5 or regular admission from 8:30 to 2:30 for \$3. As in previous years there will be a free appraisal service, delicious food, and wonderful raffle items. After last years success, Renee Dutton is again organizing the Society's display of quality antiques for sale – which means we need inventory! If you have any antiques you would be willing to donate for this tax-deductible purpose please contact Renee. And for those wishing to volunteer their services on the day of the show please contact Bev.

Additional events planned for this summer include our annual dinner (date not set yet), and 2 presentations. On July 18, at 7 pm, Sue Black will talk about the history of textile tools, focusing on what women in the early to mid 1800's would produce in their home. On August 8, at 7 pm, Tom Huptka will be speaking about his book Big House, Little House, Back House, Barn, a study of northern New England's connected farmhouse. We hope you can attend.

We continue to organize our collection and have been extremely fortunate to receive the help of several new volunteers. Bonnie Fox will be organizing our material on the houses of Lovell, with Bud Gallie serving as photographer. Martha Grzyb is transcribing some of our oral histories. Sandy Bell has offered to organize the artifacts not being used in our museum display. Ethel Hurst has been copying Lovell Town Columns and adding them to our collection, which already fills 10 volumes! Also, Sam Ring Jr. has taken on the task of "caretaker" for

the Kimball-Stanford House.

Lou Olmsted continues to enter vital statistics into our software program. Jim Monroe deserves a medal – he recently completed indexing all of our vital records! Jim has been doing this project for over 2 years and the work he has done has proved invaluable. Joel Hardman is near to completing his research on the history of Lovell telephone companies. Additionally, Pat Foley will be researching the Proprietor's Lots, tracing the ownership of the property over the years.

In the midst of this activity, we must continue our fundraising drive. This summer we hope to paint the outside of the Ell, replace the barn siding, put a new roof on the barn and main house, and improve the Ell's insulation. All this costs money and we hope we will continue to have your support. Your donations are greatly needed and appreciated!

As a final note, thank you for all the support and interest you have given the Historical Society. Without you we could not continue to grow! Don't forget to stop by the Kimball-Stanford House either to visit, conduct research, or just to enjoy the museum display. Our regularly scheduled hours of operation remain every Tuesday from 1 to 4, but we seem to be open at least 3 days a week. Also, if you pay annual dues, remember membership renewal is in June. Best wishes!

*Catherine Stone*

---

## THE LOVELL HISTORICAL SOCIETY

### MISSION

The Lovell Historical Society exists to collect and preserve historical and genealogical records, property, and artifacts, and to encourage and support interest in and study of the history of the Town of Lovell and its environs. Its collections are available for consultation by its members and other interested parties. In fulfillment of its educational mission, the Society presents public programs on relevant topics, publishes documents and the results of research, maintains an archive, a library and a museum, provides information and guidance to interested researchers, and collaborates with libraries, schools, and other organizations to carry out historical projects..

### OFFICERS 2005-2006

Catherine Stone, <i>President</i>	<i>Directors:</i>
Beverly Basset, <i>Vice President</i>	Renee Dutton
Jacqueline Stearns, <i>Secretary</i>	Ruth Mitchell
Al St. Germain, <i>Treasurer</i>	Roberta M. Chandler

### LOCATION AND HOURS

The LHS Building, located on Route 5 in Lovell, is open on Tuesdays from 1:00 - 4:00 p.m. and by appointment. All are welcome to visit our museum and research collections. Our phone number is (207) 925-3234. Email is [lovellhist@pivot.net](mailto:lovellhist@pivot.net)

## Kimball & Walker General Store

By David Hawkes

In the 1950's and beyond the Kimball & Walker General Store in Lovell Village was the center of the community. Not only was it located in the center of the village across from the Annie Heald Elementary School and the Lovell Library, but it also was at the principle intersection in the village – the corner of Route 5 and Church Street.

The front porch of the store was usually the site of several to many residents relaxing and discussing the key issues of the moment (fishing, hunting, politics, the Summer People, the mills etc.). From the porch, the sojourners could hear Mary Watson, the town telephone operator, routing calls over the hand crank phone system. For most calls, there was no need to give Mary the three-digit phone number as she knew all the numbers and just needed the name of who was the desired contact. Many times she also knew where that person was if they were not at home and would simply route the call to make the connection (call forwarding may have had its beginning with Mary).

The store itself supplied the residents and Summer People with such a wide variety of grocery, hardware, clothing items that for many there was no need to shop outside of Lovell. The meat department carried, especially in the summer, quality beef, poultry, pork and lamb. Bacon could be had by the side either sliced or unsliced. The meat cooler contained a large barrel where the corned beef resided in its brine. There was always a round of Vermont Sharp Cheddar cheese that was cut to order for the many customers who had a taste for great cheese. The fresh produce department carried a wide range of fruits and vegetables and was replenished at least weekly usually on Wednesdays to be ready for the many weekly shoppers who came to the store on Friday (pay day).

A sample of prices in the early 1960's includes 19 cents for a loaf of Wonder Bread, 19 cents for a pound of margarine, 29 cents for a package of filter cigarettes, 29 cents for a gallon of gas, 59 cents for a pound of hamburger, and \$1.19 a pound for New York sirloin steak.



*The Kimball & Walker Store, circa 1950, when it was owned by Fred Kimball and Barnes Walker.*



*Fred Kimball in the store, 1944 or 1945.*

*Photo donated by Oliveanne Kimball-Scott*

In the summer, the store was staffed with a meat cutter, a cashier and one all-purpose helper. The helper, usually a local teenager, knew how to cut glass in the hardware department, siphon hard cider in the hidden basement barrel for special customers, cut up chickens for frying, grind hamburger, prepare a pot roast, slice pork chops from a loin, run the cash register when the usual cashier was on break or had a day off, pump gas and run errands. The helper in the early 1960's worked 6 days a week, 10 hours each day and was paid \$30 in cash.

Hot summer days found the soda cooler (the old red tank like container where the soda rested in 4 or 5 inches of cold, circulating water) a very popular spot in the store. The granite hitching posts outside the store once used for horses later served to hold up the bicycles of the local kids. The young people of Lovell probably never realized that in a few ways they were ahead of the rest of the World. For instance, the Lovell Little League team had several young women as key players on the team. Patsy Blood, Polly McAllister and Wilma Merrill were several of the young women who played regularly. Some would say that was because often the team did not have nine young men available. It is accurate to note that even when there were nine male players available a quality player like Patsy Blood would be on the field. Young women were also caddies at the Lake Kezar Country Club. Several of them could carry double for 18 holes just like the guys. The usual fee for 18 holes, double, including tip was \$5. Young people in Lovell never thought about gender restrictions and I would guess do not now as adults wherever they are.

The store itself was efficiently laid out. The entrance off the front porch opened into an area where to the right and backed to the front wall was the cash register. Behind the cash register were the cigarette

(continued on page 4)

shelves, some film and camera items. The main portion of the store had two center aisles and wall shelving. The left hand wall shelf area contained the fresh produce fronted on the corner with the soda cooler. At the end of that left wall was the meat department. Its glass cases fronted the cutting area behind which was the walk-in cooler. The cooler was large for a relatively small store since it had to hold a week's supply of meat and house the produce not already out in the shelves. Typically, there would be two sides of beef, two or three cases of chickens, several pork loins, several legs of lamb, a couple of cases of lettuce and other items depending on availability and the traffic level of Summer People. Behind the refrigeration unit was the home for a fifth of Barcardi rum in case of emergencies.

The two center aisles and the remaining rear and sidewall shelves held all the usual grocery items. Prices were imprinted on all items with hand pricing gadgets that embossed the cans or packages.

The room to the left of the cash register contained some more grocery items, clothing, newspapers and magazines. Bass shoes, fishing supplies and hardware items. From that room a door

passed to a storage and hardware area. Full cases of soda and the empties in cases were in that room as well as all kinds of stuff, much of which had been there for years. Above that room, in an attic area where no one usually visited, were some wooden caskets for sale, some well-dried lumber and old bottles.

Over the years the ownership of the store had few changes. Fred Kimball and Barney Walker were partners in the ownership for many years until Fred died in 1957. A year or so later Carlton N. Brown (C.N. Brown Co.) purchased Fred's one half interest (probably to help keep the store open) and remained an owner, I believe, until his death at an early age.

The building, the block and the intersection of Route 5 and Church Street has undergone lots of change but I am sure on a warm summer evening if you were to listen hard you would be able to hear the colorful conversation of Dick Martin, George Bailey, Chuck Davis, Clint Andrews and Joe True. ♦♦

*(David Hawkes worked as a Summer Helper 1959-1960. He moved to Lovell in 1955 at age 10 and moved back to southern Maine in 1961.)*

---

## Our Country Store

By Phyllis Walker Chandler

When I was growing up in the small town of Lovell, Maine I used to visit our country store. This store was very unique, it carried every thing from Trues Elixir to pots and pans. When you first stepped into the store there was a counter with a yard stick measure on it to measure the many different materials, they had on display spools of brightly colored threads, pins and needles, everything a seamstress might want. They also had medical supplies, aspirin and cod liver oil.

Next there were kegs with all kinds of crackers, dried fruit etc. It was fascinating to go in the ice-cold freezer to look over the different kind of meat and cold cuts and to decide what you could afford this week. There was of course always a big wedge of old fashioned cheese in a round see through container, which you had to sample. Tripe and salt pork were in a barrel also.

Out in the back of the main store was the local post office where many important discussions were held and solved. I remember I loved to get the mail and I had an Uncle who knew just when his important mail or checks would arrive.

He was most upset if they didn't arrive that day and he thought I had dropped some of the mail. My family has occupied the same box number for years. My brother has it now - Box 32. Out in the back store they sold hardware and had dishes of all kinds.

This was where we went to buy wedding presents and to replace old beaten up pots and pans.

Kerosene and molasses came from a barrel. I loved to crank the dark sticky stuff into a jar. Gas and oil were sold also. Every one was given credit and you were expected to pay once a week.

The store was also called Skinner's Store because I always felt they were extra careful not to give extra portions to any one. Fred Kimball always wore a straw hat. Barnes Walker was in partnership with Fred Elmore Gilmore, better known as Shinner, who was their meat cutter. My Uncle Lester Walker better known as Cape was a clerk for many years. Ice cream cones were very small. Most of us children went to the other store to buy ice cream where we got a big scoop. ♦♦



*Phyllis Chandler with her mother, Irene Walker, in costume for the Town House Bicentennial Service, 1975.*

## The Last Full Measure of Devotion

Lovell and the Civil War  
By John and Liz McCann

In 1860 Lovell's population was 1,339, a number which had grown steadily from 365 souls in 1810. Yet by 1870, the population had fallen to 1,018, and continued declining for many years. The town is only now beginning to approach the population level of 1870.

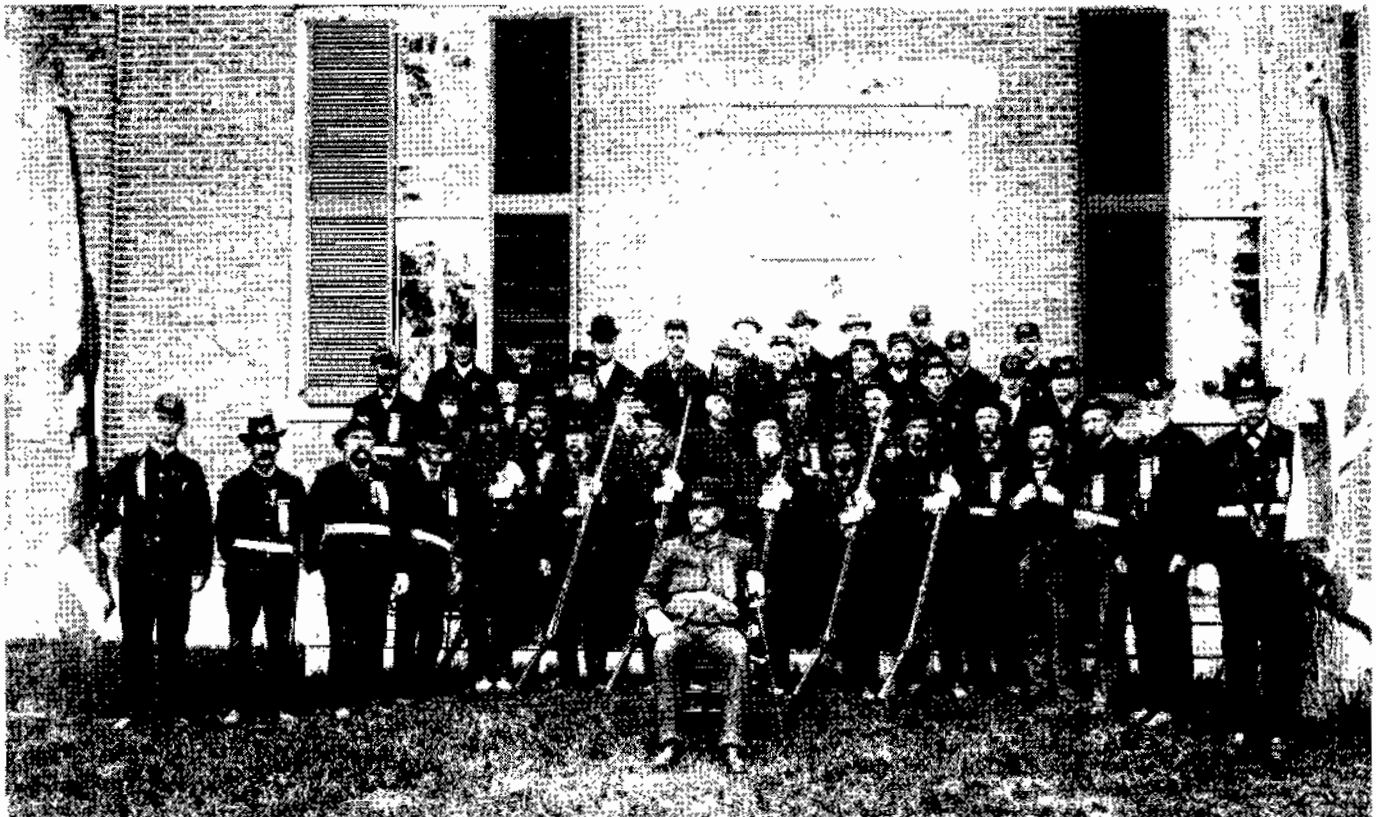
There were multiple reasons for a population loss of almost 25% between 1860 and 1870, many of which can be attributed to the impact of the Civil War. For one thing, veterans had seen more productive farmland during their service and, upon returning home after the war, decided to move their families south. There was also a nation-wide migration from the country to the cities as the Industrial Revolution heated up. Still, one of the most important and tragic reasons for the loss of population was the loss of life for Lovell men who fought in the war. It's hard to imagine the impact of losing so many young men from a single small community. Sadly, the experience of Lovell was not unique. In the current day we all mourn, quite properly, the loss of a single Maine soldier. During the Civil War, Lovell itself suffered the loss of 33 men killed either in battle or by accident and disability.

At the Historical Society we now have records of nearly 200 Lovell men who served during the Civil War. In earlier articles we shared some of the data from those records; with this article we'll look a little deeper at the physical suffering and loss of life the war brought to these men. The numbers are startling and demonstrate the level of sacrifice not only on the part of the soldiers but on their families.

There were 14 Lovell families who contributed at least 4 sons to the war. Some of these families still have descendants here. Others have vanished from the town rolls. Here are some examples of the impacts the war had on those families.

- Andrews family: 7 served; 1 died, 3 disabled
- Chandler family: 4 served; 1 POW, 2 wounded
- Charles family: 7 served; 2 died, 1 disabled
- Eastman family: 6 served; 2 died, 1 disabled
- Gray family: 5 served; 3 died
- Hatch family: 4 served; 2 died
- Stearns family: 18 served; 5 died

(continued on page 6)



*The Survivors. The Grand Army of the Republic in front of the Brick Church in Lovell Village.  
Copies of this photo were donated by Richard Fox (Fox Family Memorial) and Thelma Blood Woods*

Here are the overall casualty figures for Lovell. These figures show that over one-third of those who served were killed, wounded, disabled or captured.

- 16 killed in action
- 17 non-combat deaths (sickness or accident)
- 18 wounded (returned to action)
- 19 discharged due to disability
- 8 Prisoners of War

On the less heroic side, Lovell also had 7 men desert during the war. Five of those eventually returned. For the other two: whereabouts unknown. Given the casualty rates, desertion may have seemed pretty appealing. Still, it's a testament to the belief these men had in what they were fighting for that so few forgot their duty.

Lovell's sacrifice during the war was real and immediate. Every person in town was touched in some way by the death and destruction of the war. Their sacrifice was symptomatic of the sacrifice of the nation as a whole as this great country fought itself and its demons to emerge closer to its ideal. As Abraham Lincoln said at the dedication of the Gettysburg Cemetery in November 1863 with the closing of his famous address:

*"It is rather for us, the living to be here dedicated to the great task remaining before us – that, from these honored dead we take increased devotion to that cause for which they, here, gave the last full measure of devotion – that we here highly resolve these dead shall not have died in vain; that this nation shall have a new birth of freedom, and that government of the people by the people for the people shall not perish from the earth."*

Lovell men and their families helped to ensure that this country would, indeed, have a new birth of freedom. And it is up to us to see that these men shall not have died in vain. We are closer to them, both in time and in belief, than we often realize. ♦♦

---

## IN MEMORIAM

*We note with sadness the passing of the following friends and neighbors, and extend our sympathy to their families and friends.*

**David E. Caldwell** passed away on November 2, 2005 at his residence in Hot Springs, AK. He was the great grandson of Frank C. Stearns of Lovell and had a strong interest in the history of this town. He was a member of the Society and a valued contributor to our collection. David is survived by his parents, Ren and Jackie Caldwell of Hot Springs, and his brother and sister-in-law, John and Robyn Caldwell.

**Lillian Anna Chandler**, formerly of North Chatham, NH and Lovell, died at the age of 96 on January 18, 2006 at her daughter's home in Ashland, NH. Lillian, best known as Anna, was born February 8, 1909 in North Chatham, the daughter of Madison and Lillian Charles. Her husband, Millard H. Chandler, passed away in 1987. She was a member of the Lovell Historical Society and enjoyed crocheting, knitting, needlepoint and working in her flower gardens. Anna is survived by a son, John Chandler and his wife Roberta of Lovell, a daughter, Joanne Chabot and husband George of Ashland; five grandchildren, one great grandchild, and one great great grandchild.

**Abigail T. Gerhard** passed away on December 11, 2005 in Milford, CT. She was a long-time summer resident of North Lovell and a member of this Society. She graduated from Penn State with a degree in architecture. Her husband, William Gerhard, predeceased her in 1964. She went on to teach elementary school art for 20 years. She was a founding member of the New Haven, CT support group that would become the National Alliance for the Mentally Ill. She treasured her camp in Maine and, over the years, paddled her kayak the length and breadth of Kezar Lake. Abigail is survived by four daughters and four grandchildren.

**Wayne C. Gilman**, of Middletown, CT, died on April 4, 2006. He was born on January 27, 1934 and raised in Lovell on his families dairy farm at #4. He was a Korean War-era veteran of the U.S. Army and of the Air National Guard. Before retirement, he was the manager of Animal Facilities at Wesleyan University. Wayne was a Life Member of this Society and an active contributor of material to our collection. He loved conducting and facilitating genealogy research and published many books, including Historical Family and Cemetery Records of the "Pigwacket" Area: New Suncook (Lovell and Sweden), Maine (with Phillip Richards and Ola-Mae Wheaton) and the 14 volumes of A Maine Family Index 1900 - 1912. He is survived by his wife Portia, a son, two daughters, eight grandchildren, and six great grandchildren.

**Russell E. Johnstone**, formerly of Lovell, died at the age of 79 on February 25, 2006 after a long illness. He was the son of John E. and Ida Johnstone. He joined the U.S. Marine Corps at the age of 17, and served in the South Pacific. He was badly wounded at Iwo Jima, and received the Purple Heart, the American Theatre ribbon and the Asiatic-Pacific ribbon. Mr. Johnstone was a life member of the 4th Marine Division, the BVA, and the VFW of Lovell. He enjoyed traveling and was able to return to Iwo Jima in 1985. He is survived by his wife of 56 years, Priscilla (Bassett) Johnstone, four children, two brothers, five sisters, four grandchildren, four step-grandchildren, and two great-grandchildren.

(continued on page 7)

**Florence (Sissy) King** passed away on February 8, 2006 in Corpus Christi, TX. She was a lifetime member of this Society and loved old homes and historical renovation. From 1978 until 1998 she and her husband Richard were the owners of Fairview Inn (Conifer). She was a well-known supporter of many charitable organizations, such as Driscoll Children's Hospital and the South Texas Planned Parenthood. She was predeceased by her first husband, Benjamin Eshleman Jr. She is survived by her husband, Richard King III, 3 children (Lica Layton, Ben Eshleman III, and Amy Ryder), 3 stepchildren, 6 grandchildren and 2 step-grandchildren.

**Gladys L. Littlefield**, long time Lovell resident and Honorary Life Member of this Society, died on April 12, 2006. She was born in Skowhegan on December 7, 1910 to Emmons and Laura Heald. Gladys taught school for a short time in West Falmouth, next at the one-room school house in Stow, and then for 25 years in Lovell at Annie Heald School and New Suncook. She was a founding member of this Society, was honored as Grand Marshall of the 1998 Lovell Old Home Days Parade, and most recently became the recipient of the Boston Post Cane. She was predeceased by her husband Robert in 1995. She is survived by four sons, a daughter, 12 grandchildren and 16 great grandchildren.

**Earl S. McAllister**, formerly of Lovell, died unexpectedly March 19, 2006. He was born in Lovell December 15, 1945, a son of Carroll and Edith Smith McAllister. Earl had worked for many years at Malden Mills in Bridgton, and most recently in Lawrence, MA. He served his country during the Vietnam War and was a former member of the Norway National Guard. He is survived by his wife Judith, a daughter, a son, a brother, three sisters, and three grandchildren.

**Harold E. McAllister**, formerly of Lovell, died January 21, 2006. He was born in Norway October 24, 1936 and raised in Lovell. He graduated from Fryeburg Academy in 1955 at which time he moved to the Norway area. He was first employed at the Paris Manufacturing Co. and then was in the shoe industry for 39 years. For the past ten years he was the owner and operator of Mac's Tool and Saw Sharpening Service in Norway. He is survived by his wife of 47 years, Marie (Paradis) McAllister, 2 daughters, one son, a brother, 9 grandchildren and 3 great grandchildren.

**Bessie E. Robinson**, formerly of Lovell, passed away on February 19, 2006. She was born March 30, 1922 in Lovell, the daughter of Arthur and Nellie Witham. She was educated in local schools and graduated from Bridgton High School in 1940. Bessie worked as a welder during World War II at the South Portland Shipyard, later as a seamstress, then as a hairdresser at her own shop. She was predeceased by her first husband, Edmund Waterman in 1955, and by her second husband, Wendall Robinson in 1985. She is survived by a son, a daughter, 5 grandchildren, and 3 great grandchildren.

---

## A FEW STORIES FROM "LOVELL CONVERSATIONS" - FEBRUARY 6, 2006

### What was it like in Lovell during World War II?

Ron McAllister: "I remember during the War years in West Lovell they had an aircraft spotting station on a knoll just above the Stearns farm, and Mother used to take her turn over there like everyone else. I'd go with her and we'd watch for airplanes. We had books that showed the different types of planes, and you'd call, I believe it was Westover Air Base and report approximately how high a plane was flying, and which way, and one thing and another. For a little kid that was a mixed thing. It was kind of fun to go over there and look for planes, but it also bothered you to figure out why you had to look for them. You grew up a little fast, in some ways."

Phyllis Chandler: "I thought it was scary. I was a little timid, and I can remember when they had what they called a blackout. I did not like being in the black, and I did not like sitting still. And they'd say to me, 'Now you go sit in the chair and wait till this is over!' And my uncle, who lived in the other part of our house, he would go out and patrol the streets, and that was kind of scary to me, because I wondered just what he was doing out there."

Ron McAllister: "I had an uncle in the old Maine General Hospital, which is the Maine Medical Center now, and we'd go down there. You used to take friction tape; you'd tape your headlights so it was about an inch high and maybe three inches long, a little strip on each one; no other lights. You could drive through the city of Portland and not see one bit of light - anywhere - none. It was black. Everybody had dark curtains to pull, no street lights. Cars had just enough light so you could kind of see the road."

Phyllis Chandler: "We had rationing of sugar, and I remember - I had two brothers - and my mother put our sugar in a little jar, and I could hang onto my sugar (laughter) but my younger brother could not and he would want some of ours, but I think I held my own with him and kept what I had! Coffee and shoes and meat - all had coupons for that."

Juanita Perkins: "They gave you a coupon for one pair of shoes a year! Everything was rationed."

## Gifts and Donations

*We are very grateful for the following gifts received since the last newsletter:* **Samuel Ring** – Hutchins genealogy, Handmade wood planer, Fire extinguisher; Don Dickerman photo; **Beverly & Jack Bassett** – 50 Sermon-Talks for Boys and Girls by Carl S. Weist, Maine is Forever by Inez M. Farrington, My Maine Folks by Inez M. Farrington, permission to scan 2 family photos, Bassett & Gammon Genealogy Material, Bassett family Deeds & Bills of Sale; **Janice Thomson** – Two sets of andirons, cast iron fireplace set, and log holder basket; **Ruth & Fred Mitchell** – Collection of old cameras and equipment. The cameras include a Kodak Brownie, Argus 35mm, 2 Folding Pocket Kodaks, 2 Kodak Instamatics, a Movie Camera and a Polaroid Land Camera; **Charlotte Hobbs Memorial Library** – A Reporter's Journal: Uphill is Easier by John Derr, Don't Forget to Wind the Clock by John Derr, Early Oak Card Catalog Cabinet; **Pat Foley** – Information on the 1998 Ice Storm, Molly Ockett, and house photographs; **Juanita Perkins** – Tin measuring quart; **Joe & Betsy Moody** – “Woodsedge Camp” placemat from the camp of Muriel Jarvis; **Charles & Claudia Bengé** – Oral history interview of Charlies two military tours in Vietnam, permission to scan 8 photos taken during his tours; **Phyllis Elliott** – 5 early postcards, 2 photos of the Russell homestead, assorted news clippings; **Town of Lovell** – Box containing unused 1920 Presidential Ballots. *Cash donations have been gratefully received from:* **Steve & Mary Anderson, Frank Boni & Julia Ann Gehman, Gordon Eastman, Lizbeth Ferris, Maxine Fisher, Jane Gleason, Paul & Cynthia Littlefield, Raymond Littlefield, Franklin McAlister** (in memory of Herbert & Nettie McAlister and their children), **Jim & Nancy Van Metre, Sarah Miller, Kelly Rickards, and Robert Winship.**

*If you have made a donation or given an artifact or other form of historical material and it has not been listed here or previously noted, please contact us immediately. We appreciate the thoughtful generosity of our members and friends, and most certainly want to acknowledge and list gifts properly.*

---

The Lovell Historical Society  
P.O. Box 166  
Lovell ME 04051

**FIRST CLASS**

DO YOU WANT TO CONTINUE TO RECEIVE THE LHS NEWSLETTER?

If your mailing label doesn't say "6-07" or "Life," it is time to join or renew for the current year. Thanks!